

Creating, Optimizing and Planning Positive Energy districts

COPPER's PED Challenges:

1. Societal challenge to include vulnerable citizens
2. Energetic challenge to connect PEDs in the energy system
3. Governance and spatial energy planning challenges

The overall objective of the COPPER project is to increase and expand the engagement of citizens within and across ECs to create PEDs on different geographical levels, by facilitating energy information supply and communication between citizens, modelling energy systems for a balanced energy system and improving strategic and integrated spatial energy planning.



- WP2 starts from the view point and position of citizens, including active citizens engaged in energy communities (ECs) and silent and vulnerable citizens
- WP3 provides energy modelling, based on energy-related information for the cases of the project from local governments and DSO's in order to solve the energy-related challenge of becoming a PED.
- WP4 starts by identifying legal barriers and opportunities for ECs to play a role in PEDs and next to this uses input from WP3 to identify governance solutions to develop PEDs in their broader geographical and institutional context.



Cases

Torres Vedras - Somos Comunidade (Portugal)
 Nijmegen West – Kanaalzone (the Netherlands)
 Energy Community Avedøre (Denmark).
 Energi Community Skårup (Denmark).
 Eigersund (Norway).



Karl Sperling
AAU



Peter Sorknæs
AAU



Martijn Gerritsen
RU



Henk-Jan Kooij
RU



Mark Wiering
RU



Klaudia Tolstow
SEAS



Edesio Miranda-Barbosa
SEAS



Arild Refsland
SEAS



Anders Horsbøl
AAU



Ronald van Buuren
HAN



Susana Batel
ISCTE



Maja Louise Ørsted Clemmensen
EBO



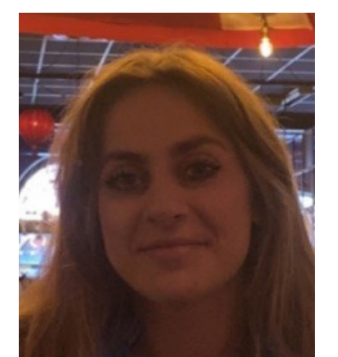
Stephan Krabsen
EBO



Kristian Borch Rualis
SEAS



Roger Larsen
SEAS



Susanne Håland
SEAS