

# InPUT

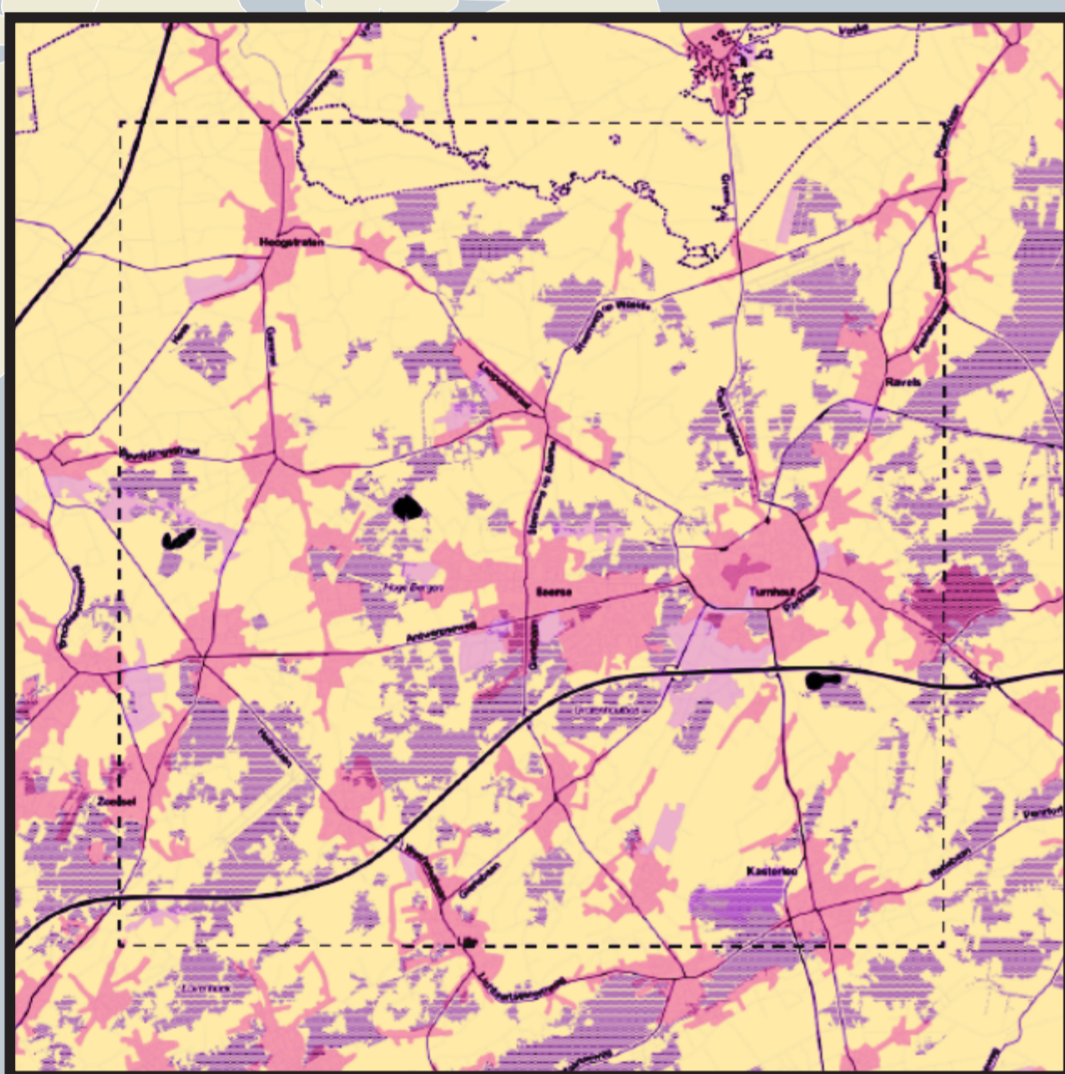
## Engaging Places and Communities for Integrated Peri-Urban Transitions

**InPUT clarifies how the 15-minute city can be extended and endorsed across European peri-urban areas towards fairer and more cohesive territories.**

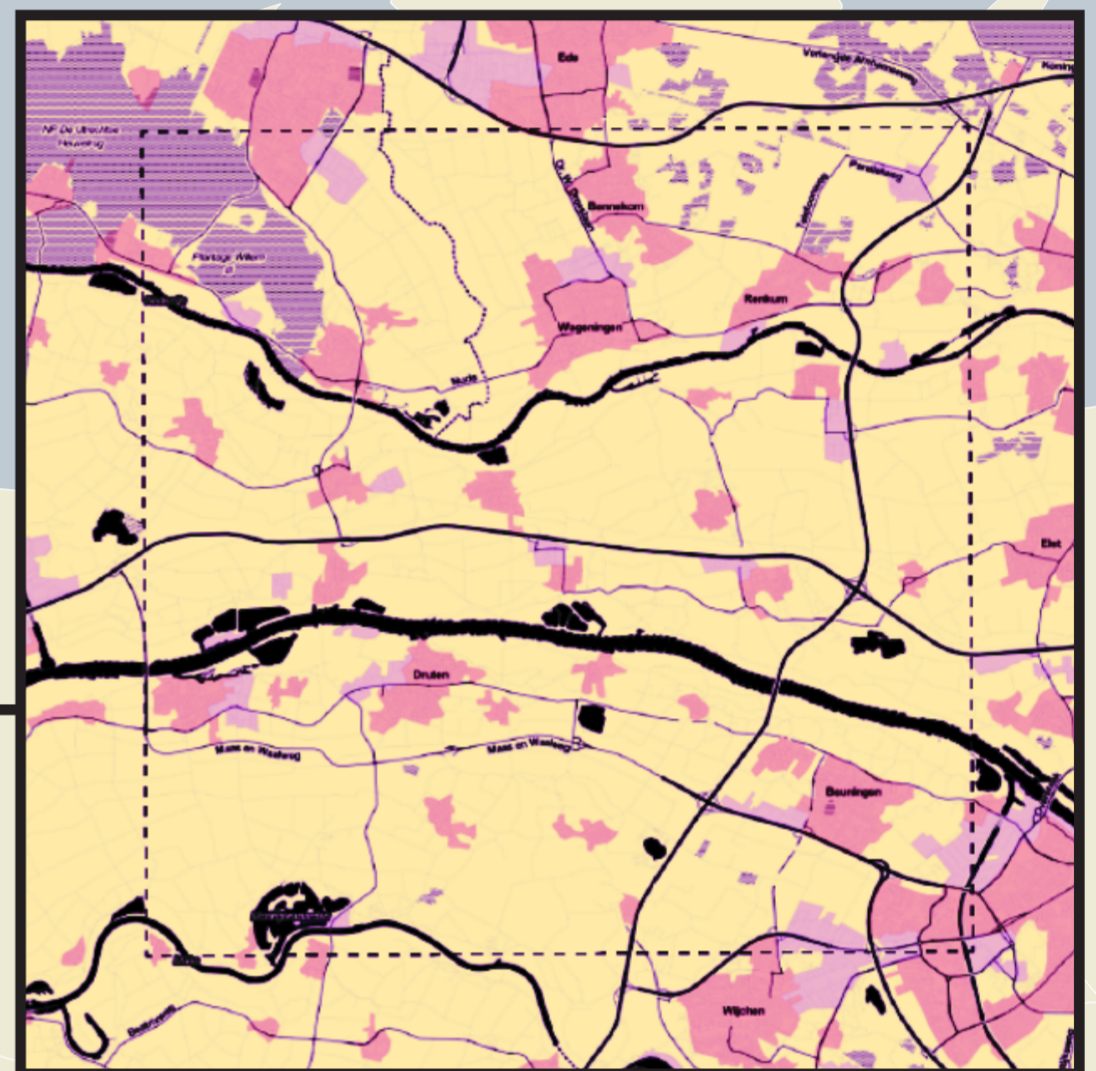
**WP1 //** Involve local stakeholders in identifying functional and mobility needs, institutional resources and community aspirations.

**WP2 //** Co-design place-specific spatial visions and strategic transformations enabling peri-urban 15-minute environments.

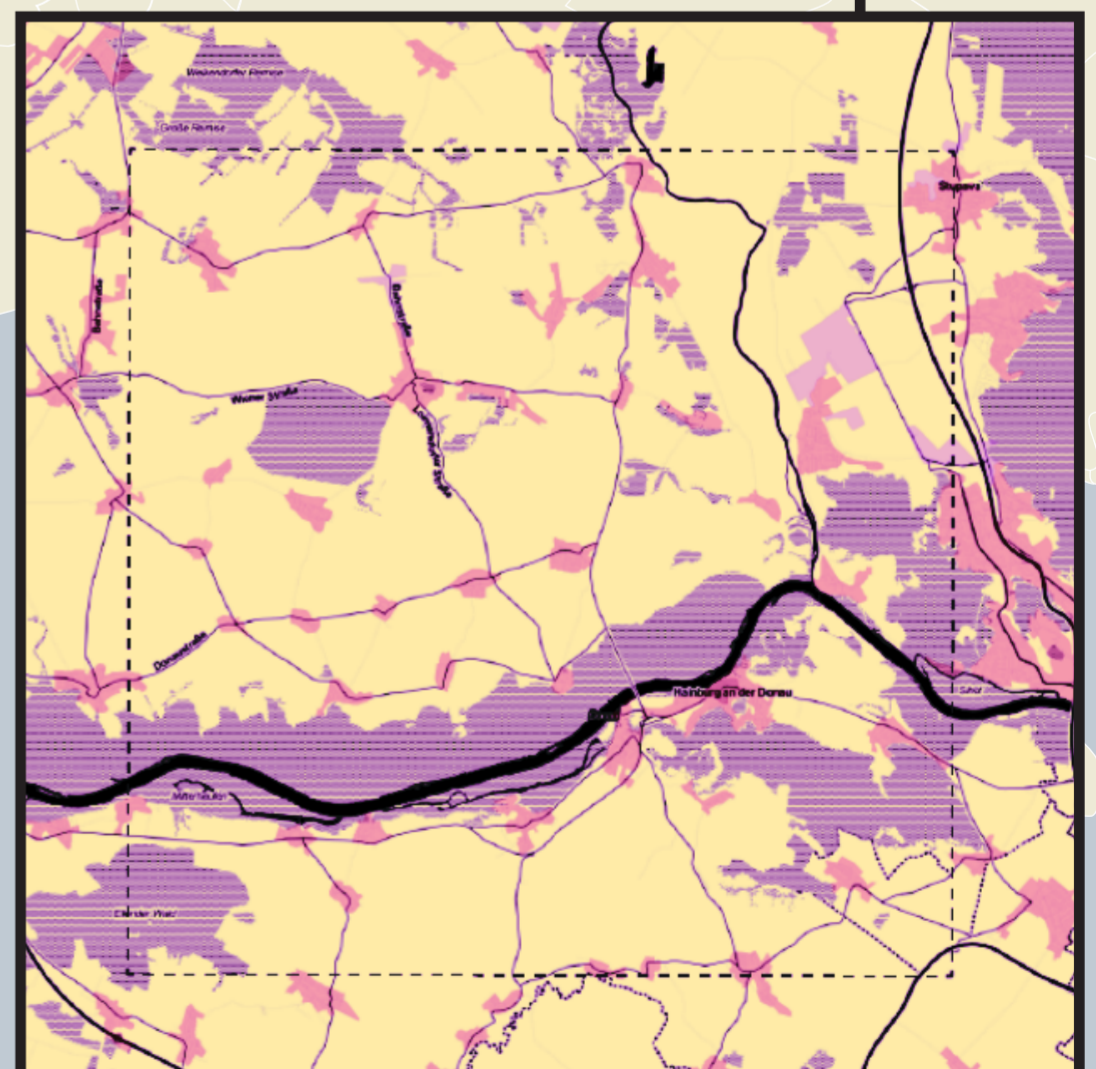
**WP3 //** Evaluate the performance and potential of the emerging visions along the fundamental pathways of the 15-minute city.



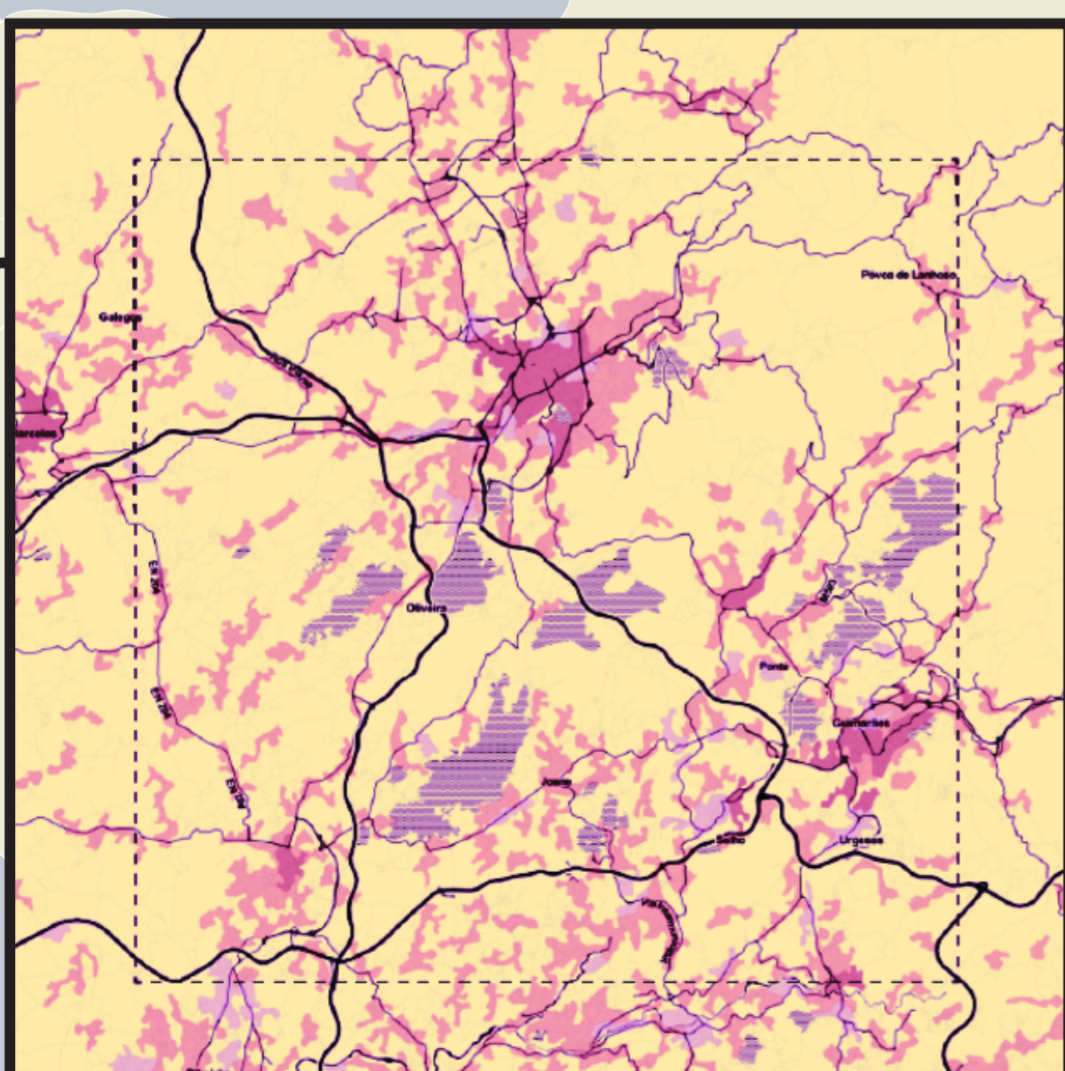
NETHERLANDS  
BELGIUM



AUSTRIA



PORTUGAL



### Cooperation Partners //

Ministerie van Binnenlandse Zaken en Koninkrijksrelaties (NL)  
PBL Netherlands Environmental Assessment Agency (NL)  
Hannah Arendt Institute (BE)  
Vlaams Bouwmeester (BE)  
SUM - Stadt-Umland-Management (AT)  
Comissão de Coordenação e Desenvolvimento Regional do Norte (PT)  
Município de Braga (PT)